

San Francisco Eligible Metropolitan Area 2017 Quality Management Program & Performance Measures Presentation

SAN FRANCISCO HIV COMMUNITY PLANNING COUNCIL

PREPARED BY:

DEAN GOODWIN, ADMINISTRATOR, SFDPH-HIV HEALTH SERVICES

JOHN AYNSLEY, QUALITY MANAGEMENT COORDINATOR, SFDPH-HIV HEALTH SERVICES

ADDITIONAL DATA PREPARATION BY:

KEVIN LEE, PLANNER/EVALUATOR, MARIN DH&HS – HIV/AIDS SERVICES

MATT GELTMAKER, STD/HIV PROGRAM SECTION, SAN MATEO HEALTH SERVICES

REVIEWED BY:

BILL BLUM, DIRECTOR, SFDPH-HIV HEALTH SERVICES

SFHCPC STEERING COMMITTEE

Presentation Outline

- I. Purpose, Goals, & Activities
- II. Considerations & Measures
- III. Data Overview
- IV. Analysis
- V. Questions & Feedback

Quality Management Purpose

- Information
- Reporting
- Evaluation

Quality Management Program - Goals

- Analyze HRSA HAB Clinical indicators across all three counties.
- Utilize data to improve quality of care and health outcomes.
- Report to State, Federal, and City funders on key indicators.

2017 QM Activities

- Increased integration with the eClinicalWorks electronic medical record
- State Office of AIDS ARIES HAB QM report improvements
- Increased frequency of uploads into ARIES
- Food and Nutrition Services linkage and retention QM program implemented
- Multiple trainings on a variety of topics

Quality Assurance Data Considerations



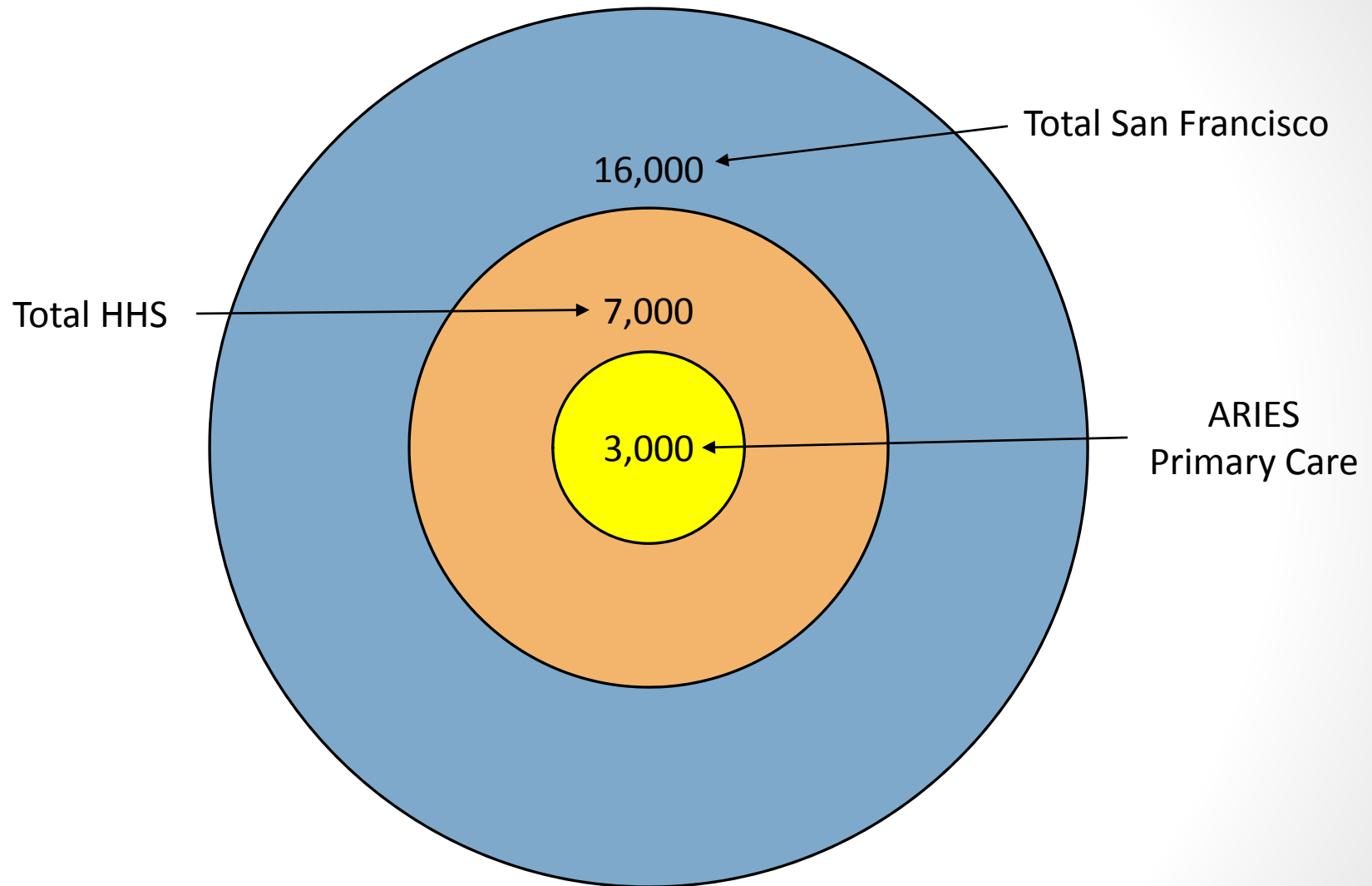
Data Perspective and Considerations

- This presentation uses the ARIES database, which is programmed to comply with all State and Federal grant reporting requirements.
- This presentation is designed to address CQI thresholds not to compare models of care.

Quality Assurance Data Parameters



Quality Assurance Data Parameters

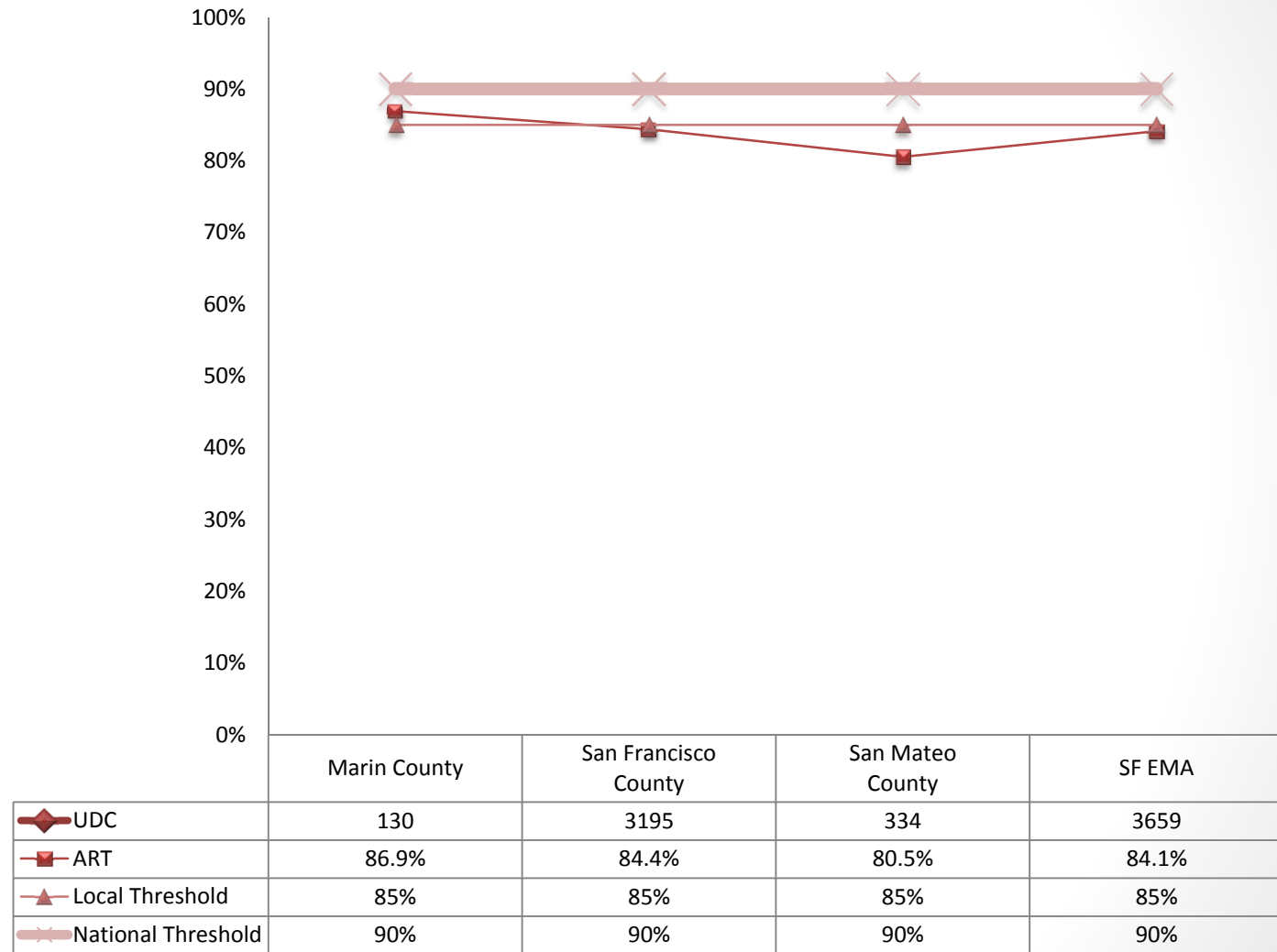


2017 DATA

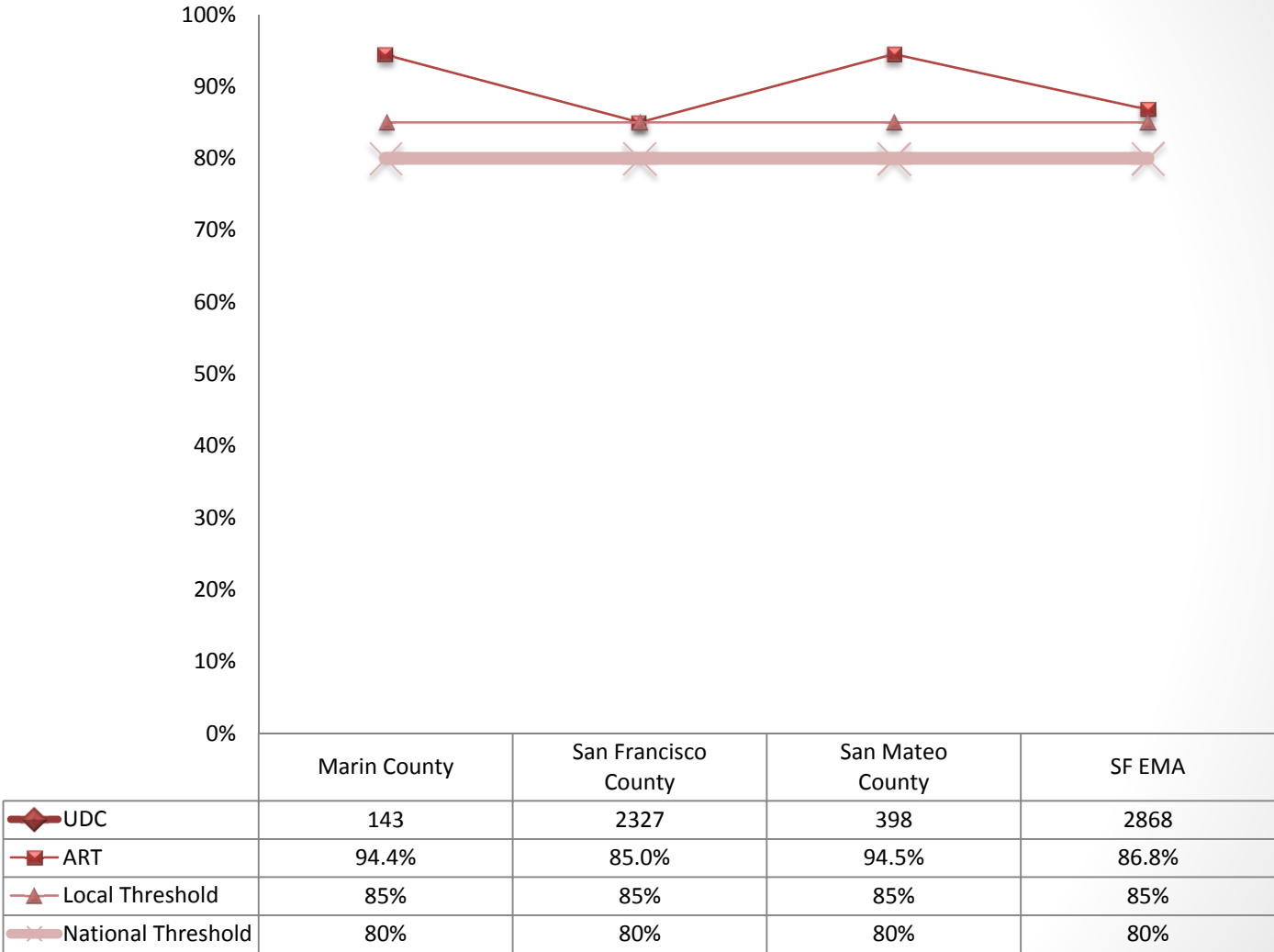
Quality Assurance Performance Measures

- Retention in Care
 - % of clients with a medical visit in the first half of the year and the second half of the year
- ART Prescription
 - % of clients with HIV/AIDS who are prescribed ART.
- Viral Load Suppression
 - % of patients with a viral load test result of <200 .

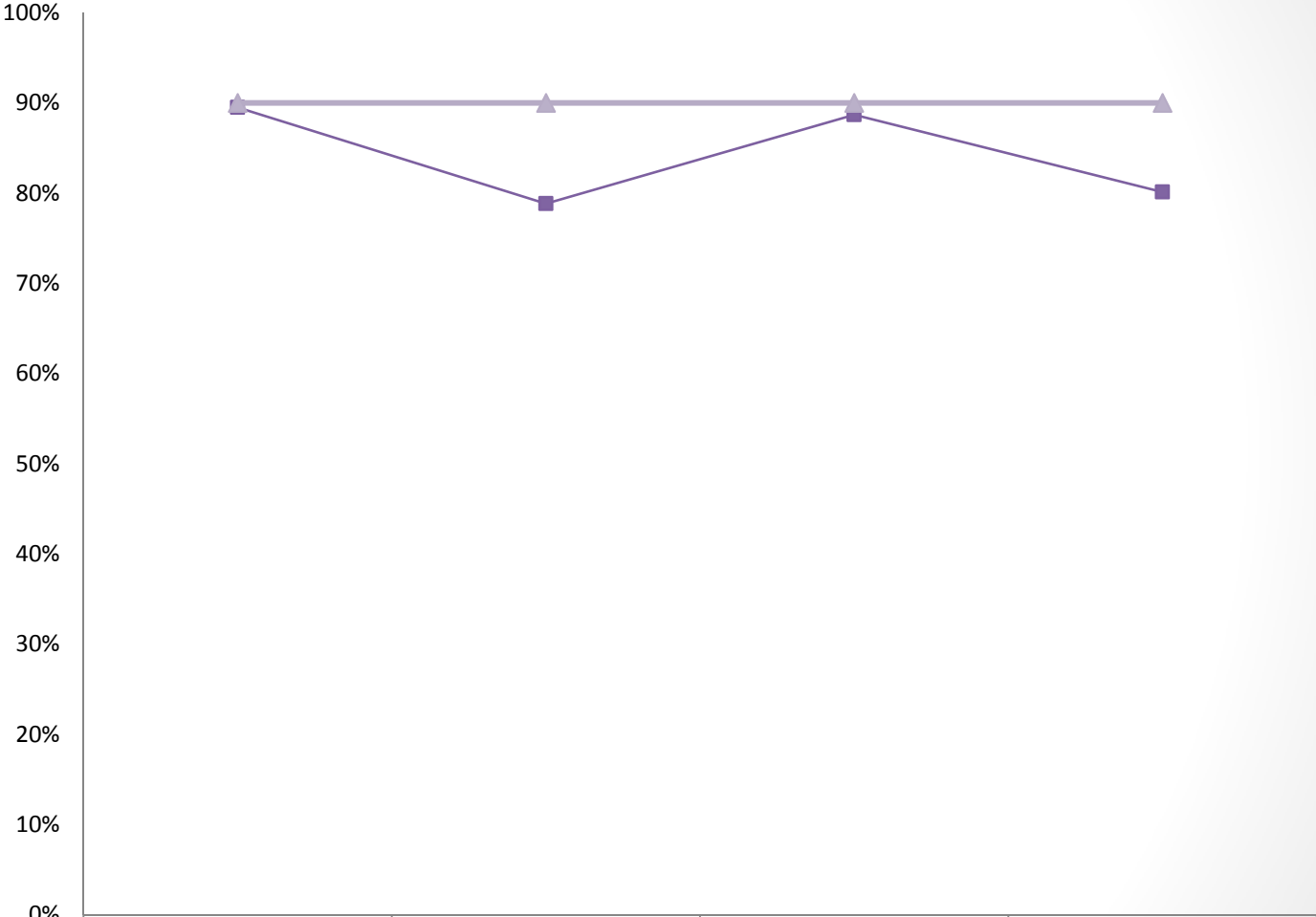
Quality Assurance – Retention in Care 2017



Quality Assurance – ART Prescription 2017

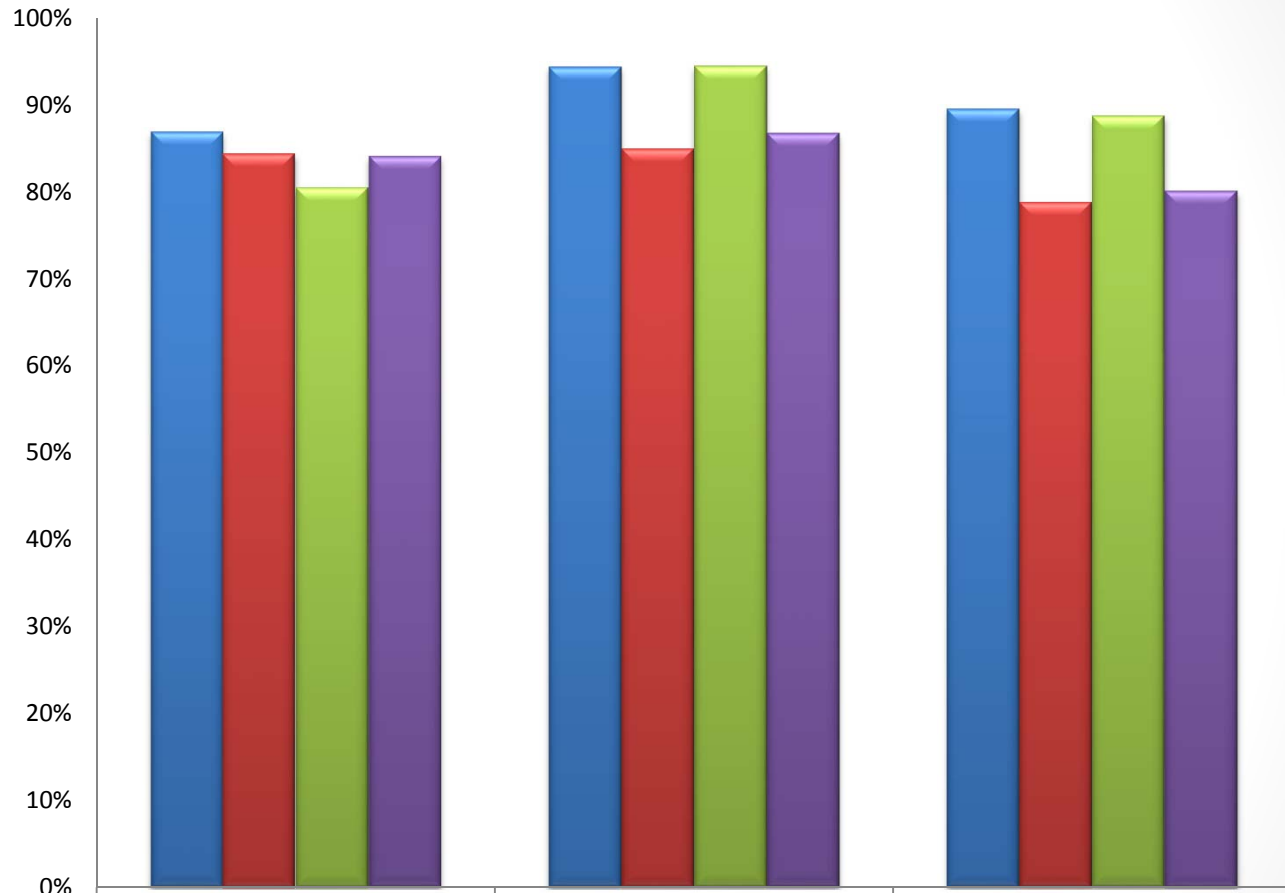


Quality Assurance – Viral Load Suppression 2017



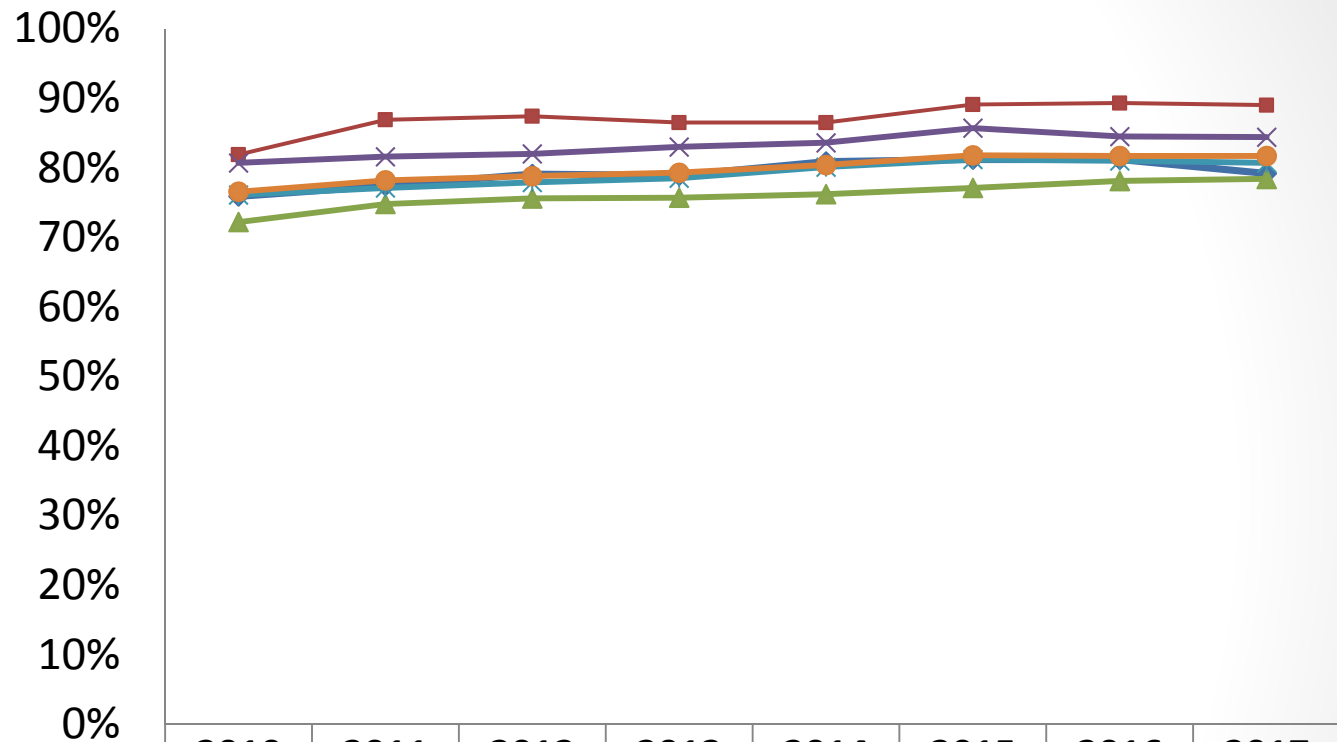
	Marin County	San Francisco County	San Mateo County	SF EMA
◆ UDC	143	3681	398	4222
■ Viral Load Suppression	89.5%	78.8%	88.7%	80.1%
▲ Local & National Threshold	90%	90%	90%	90%

SF EMA QA – County Performance Summary 2017



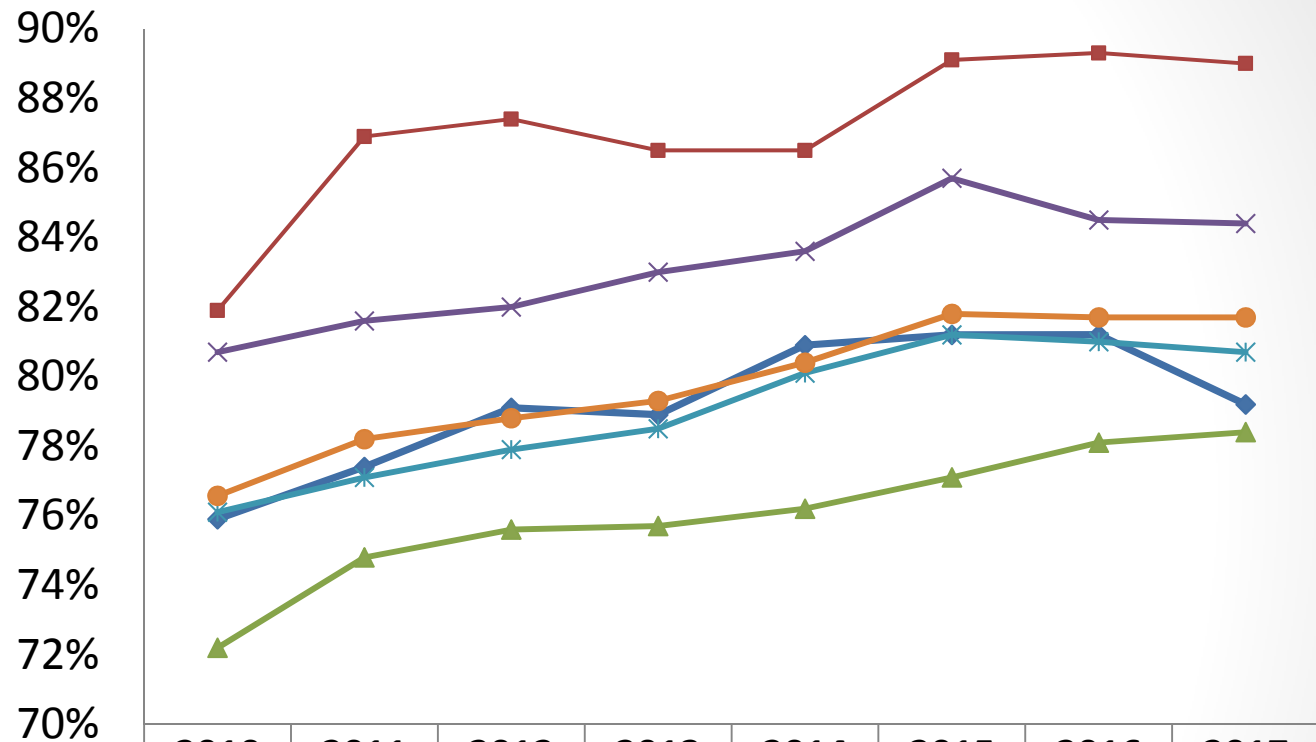
	Medical Visits	ART Prescription	Viral Load Suppression
■ Marin County	86.9%	94.4%	89.5%
■ San Francisco County	84.4%	85.0%	78.8%
■ San Mateo County	80.5%	94.5%	88.7%
■ SF EMA	84.1%	86.8%	80.1%

Viral Load Suppression by Demographic – 0%-100%



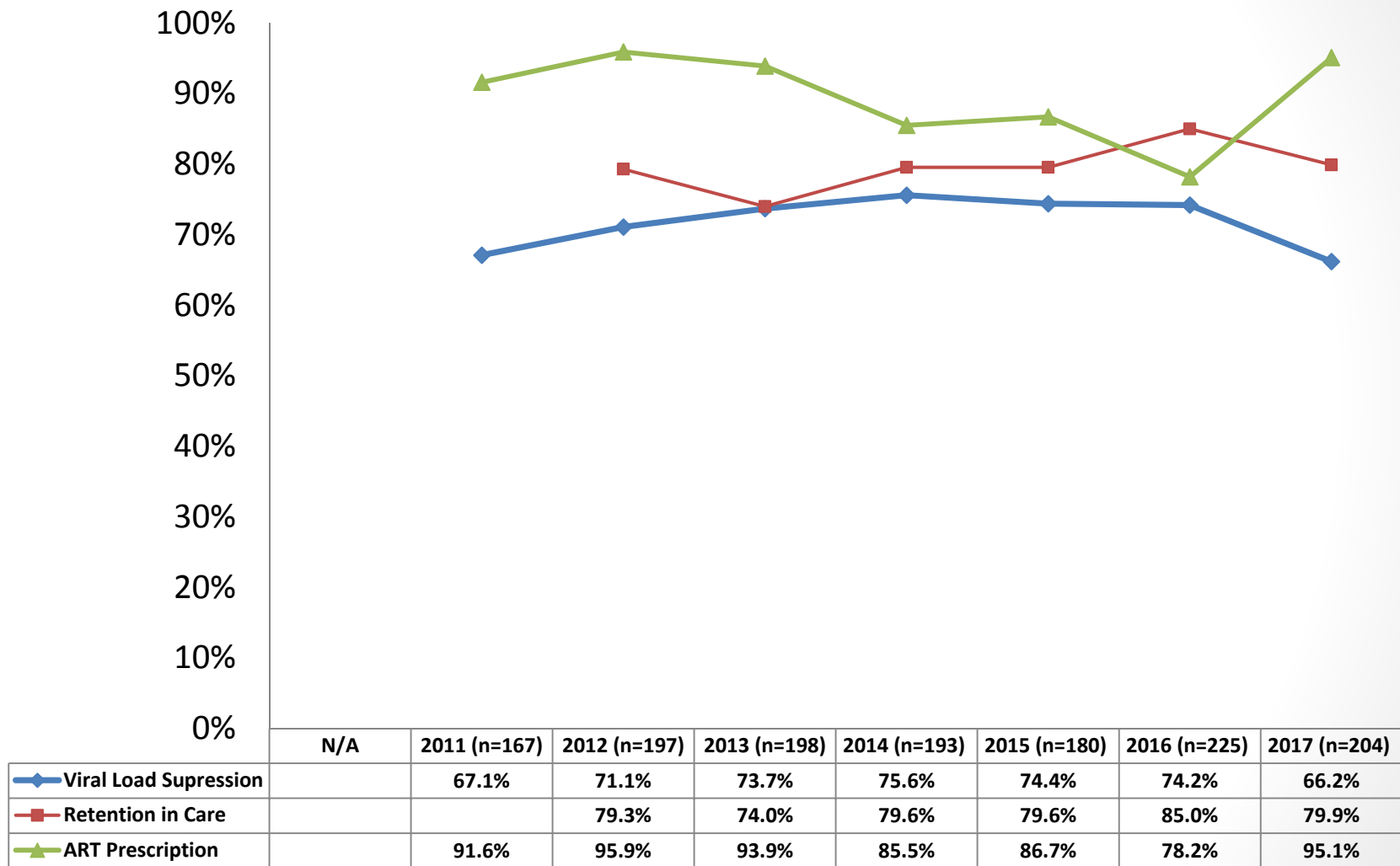
	2010	2011	2012	2013	2014	2015	2016	2017
◆ Transgender MTF	75.9%	77.4%	79.1%	78.9%	80.9%	81.2%	81.2%	79.2%
■ Asian & Pacific Islander	81.9%	86.9%	87.4%	86.5%	86.5%	89.1%	89.3%	89.0%
▲ Black & African American	72.2%	74.8%	75.6%	75.7%	76.2%	77.1%	78.1%	78.4%
✕ Hispanic & Latino/a	80.7%	81.6%	82.0%	83.0%	83.6%	85.7%	84.5%	84.4%
* White	76.1%	77.1%	77.9%	78.5%	80.1%	81.2%	81.0%	80.7%
● All	76.6%	78.2%	78.8%	79.3%	80.4%	81.8%	81.7%	81.7%

Viral Load Suppression by Demographic – 70%-90%

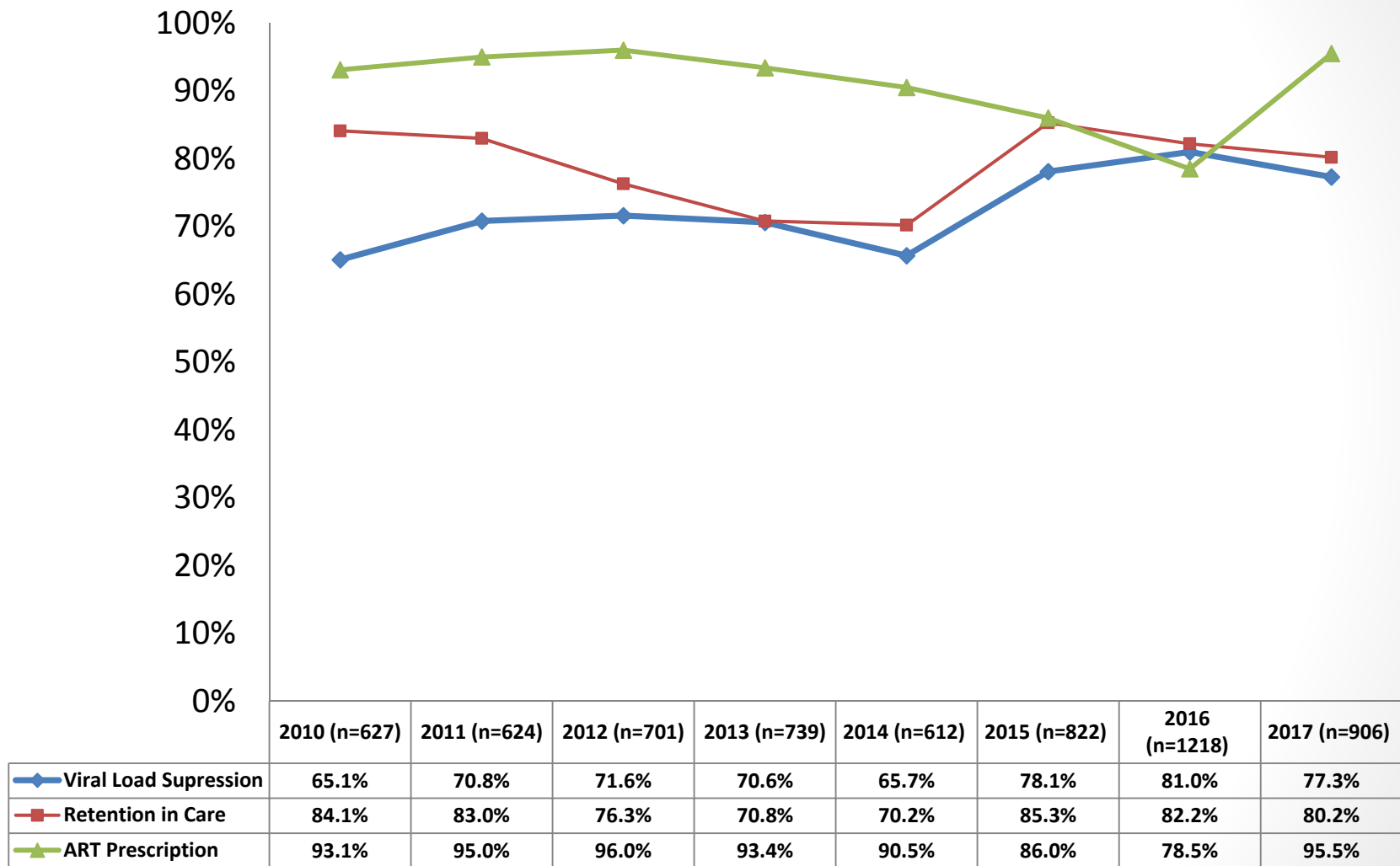


	2010	2011	2012	2013	2014	2015	2016	2017
◆ Transgender MTF	75.9%	77.4%	79.1%	78.9%	80.9%	81.2%	81.2%	79.2%
■ Asian & Pacific Islander	81.9%	86.9%	87.4%	86.5%	86.5%	89.1%	89.3%	89.0%
▲ Black & African American	72.2%	74.8%	75.6%	75.7%	76.2%	77.1%	78.1%	78.4%
✕ Hispanic & Latino/a	80.7%	81.6%	82.0%	83.0%	83.6%	85.7%	84.5%	84.4%
✱ White	76.1%	77.1%	77.9%	78.5%	80.1%	81.2%	81.0%	80.7%
● All	76.6%	78.2%	78.8%	79.3%	80.4%	81.8%	81.7%	81.7%

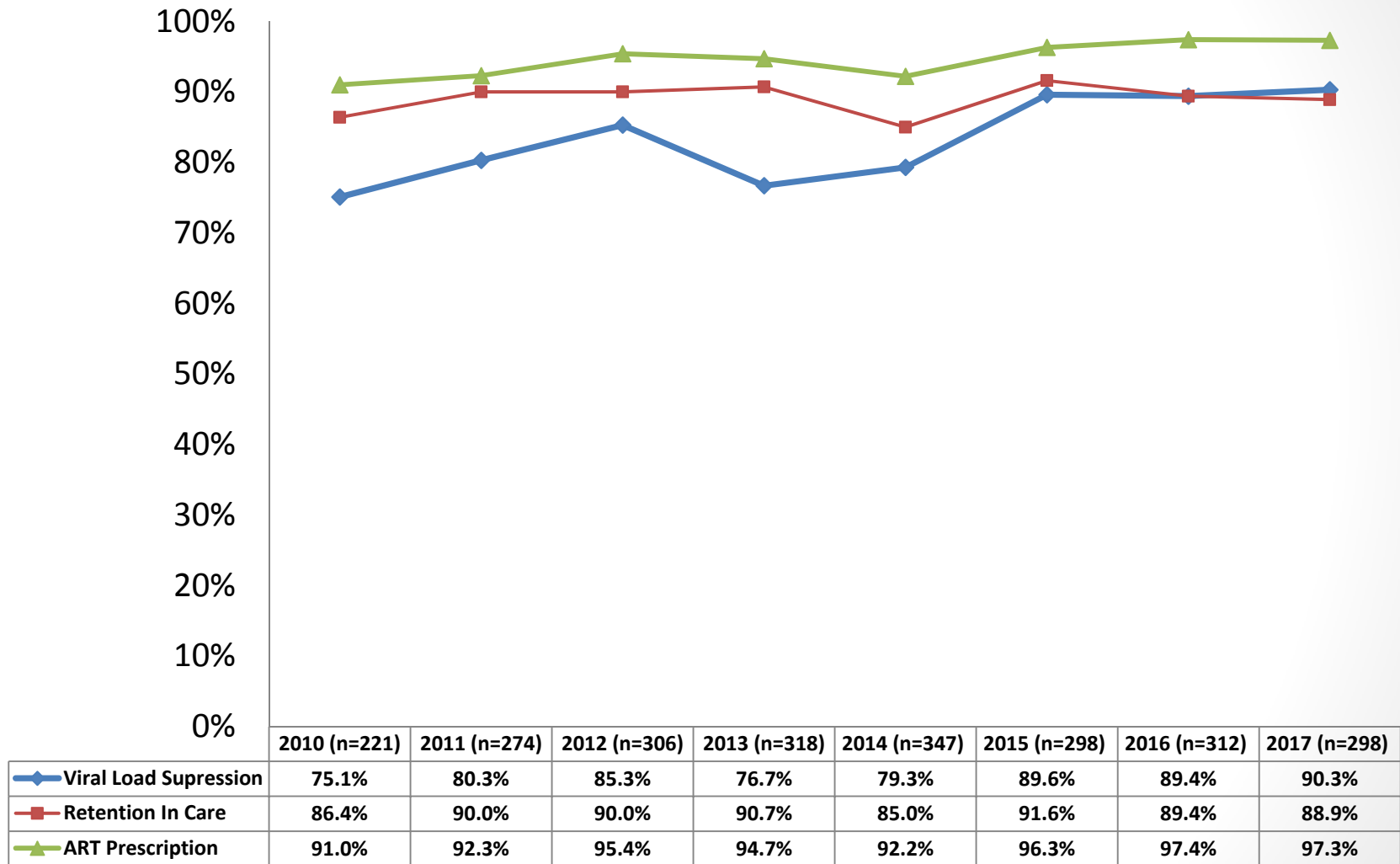
Black Health Centers of Excellence 2010 - 17



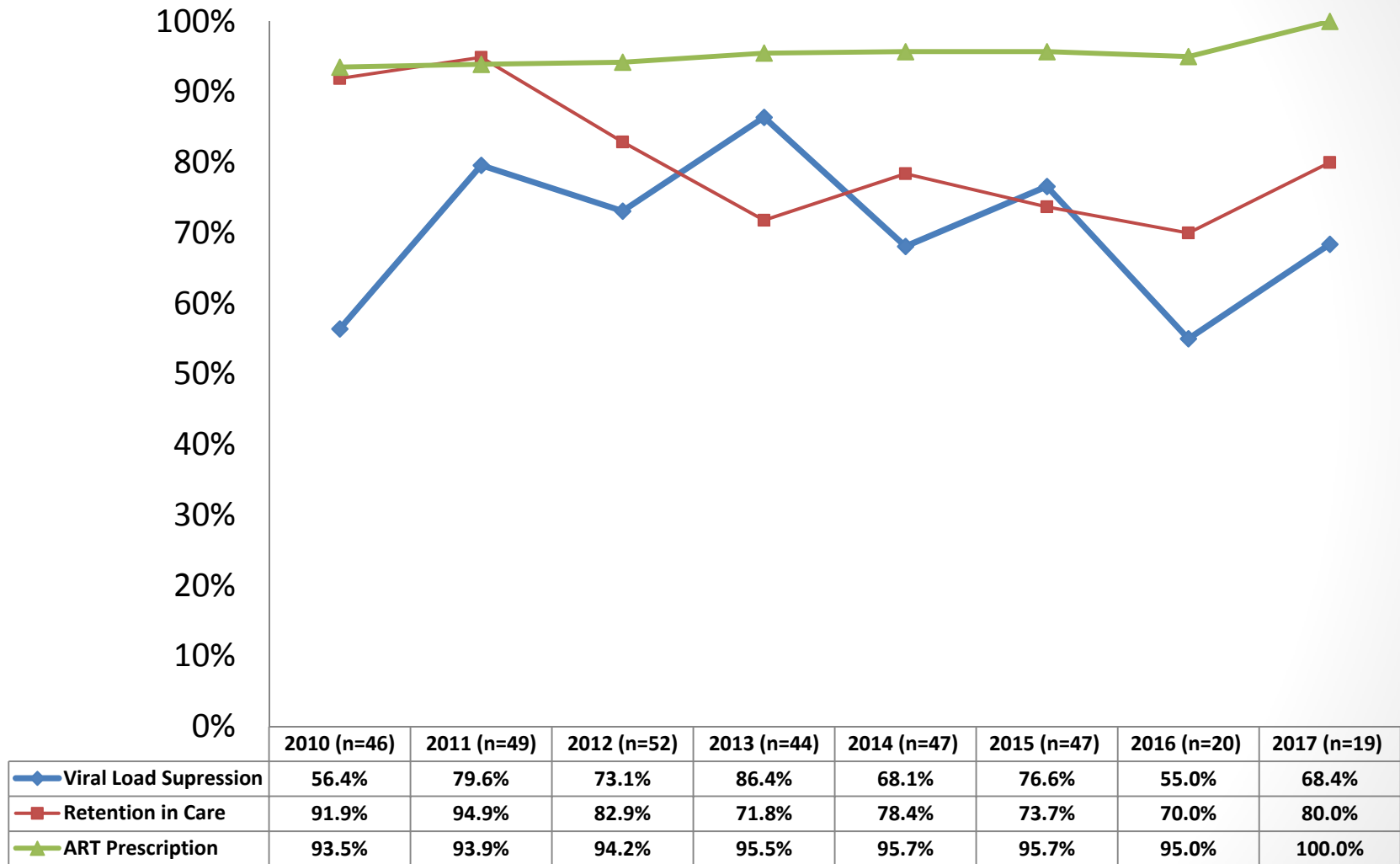
CCHAMP Centers of Excellence 2010 - 17



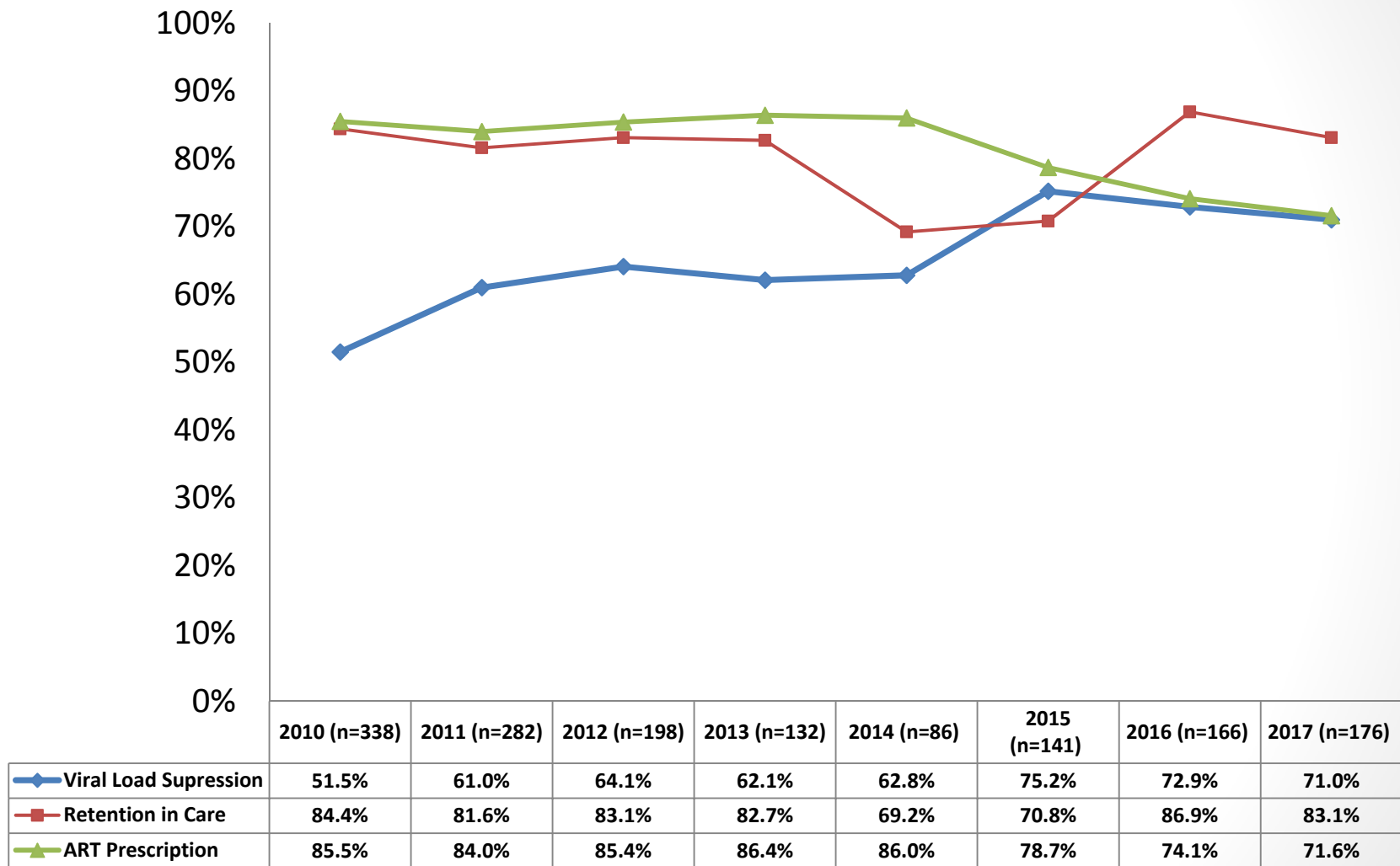
Mission Center of Excellence 2010 - 17



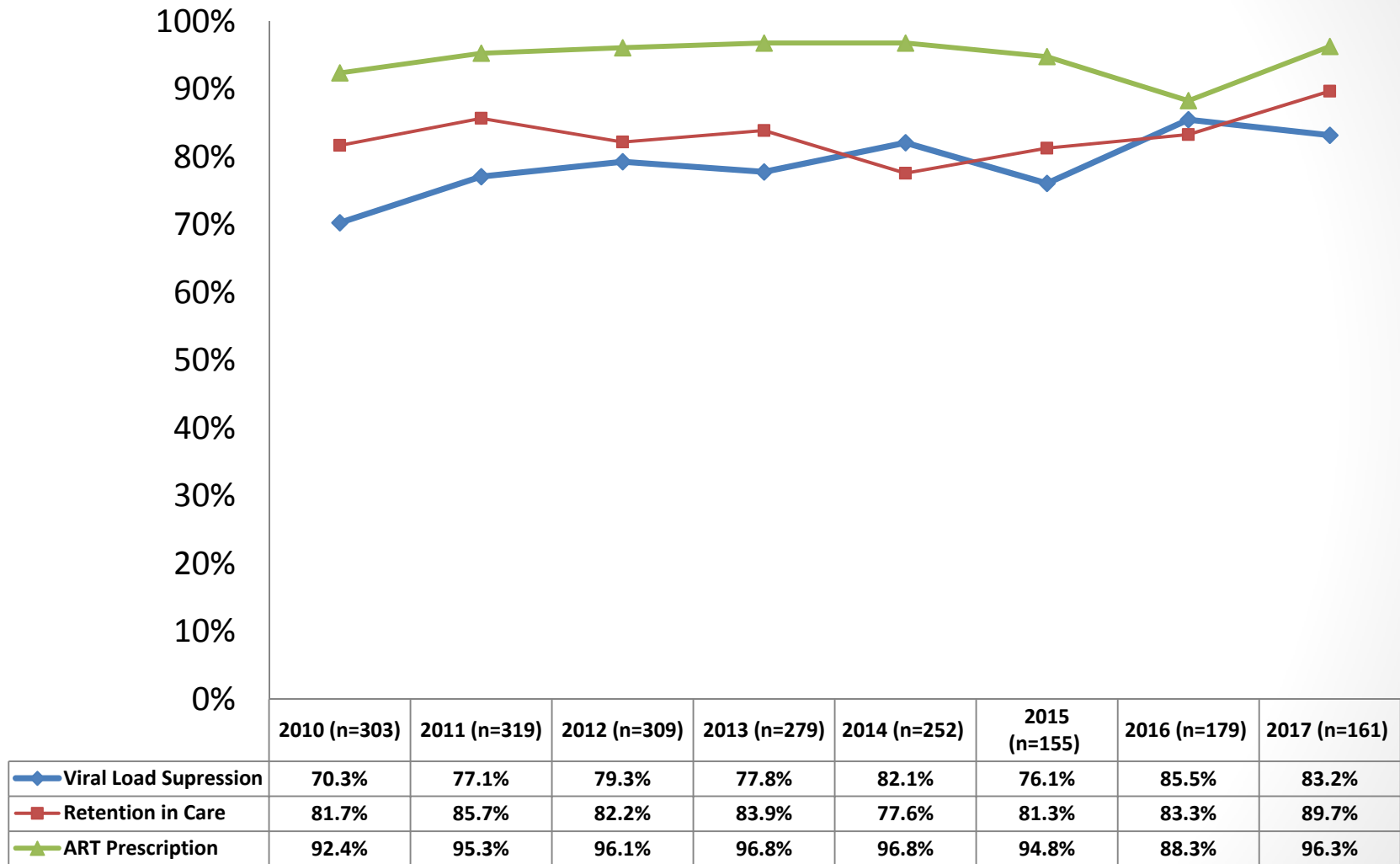
Native American Centers of Excellence 2010 - 17



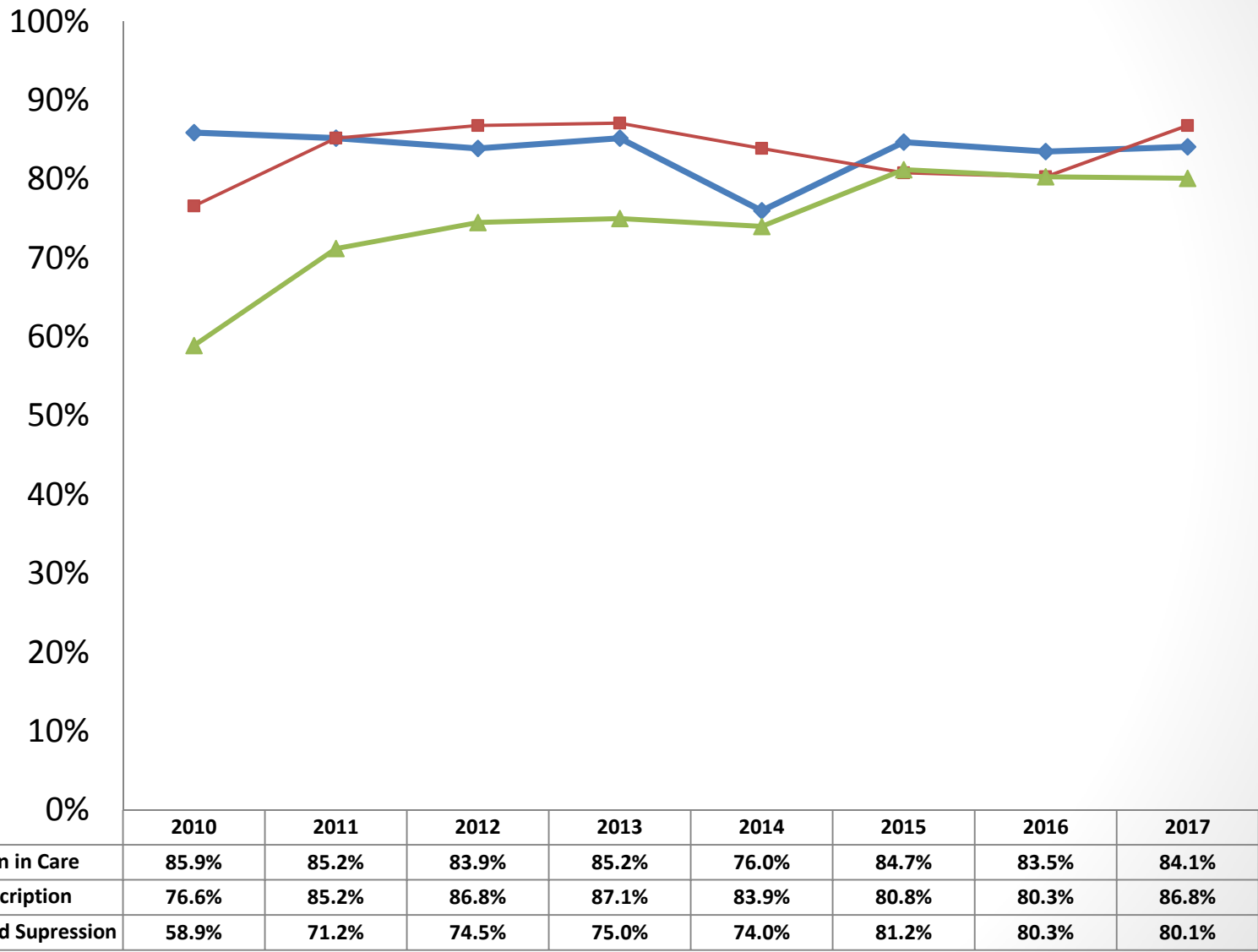
Tenderloin Area Centers of Excellence 2010-17



Women's Centers of Excellence 2010-17



SF EMA – Quality Indicators 2010-17



QUESTIONS & FEEDBACK

